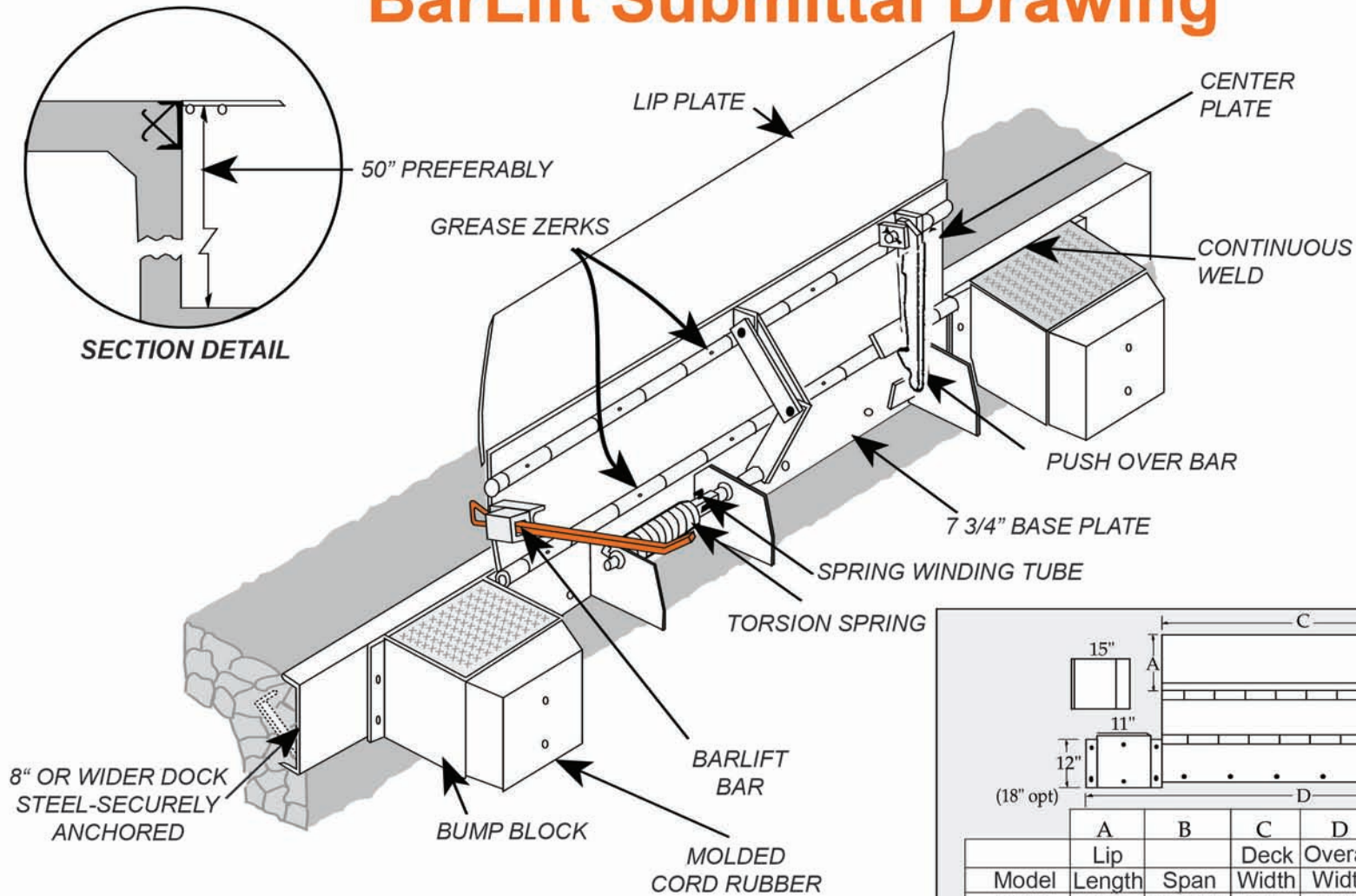


# BarLift Submittal Drawing



SECTION DETAIL

**NOTES:** Deck & Lip - 55,000 lb. min. yield steel.  
**30,000 lb. Capacity**, in stored position, Units include C1045 cold rolled 11/16" rod and cold drawn seamless tubing (1-1/4" OD, 5/16" wall).



PO Box 338 • Spring Hill, Tennessee 37174  
 931.486.2296 • 800.251.3382 • Fax: 931.486.0316  
 www.pioneerleveler.com

	A	B	C	D	E	F
	Lip	Span	Deck	Overall	Rollover	Plate
Model	Length	Span	Width	Width	Capacity Lbs.	Thickness
BL66	15"	27 3/4"	66"	96"	20,000	3/8"
BL66H	15"	27 3/4"	66"	96"	25,000	7/16"
BL66-17	17"	29 3/4"	66"	96"	20,000	3/8"
BL72	15"	27 3/4"	72"	102"	20,000	3/8"
BL78	15"	27 3/4"	78"	108"	20,000	3/8"
BL84	15"	27 3/4"	84"	114"	20,000	3/8"

**SPECIFY JOB REQUIREMENTS FROM**

--	--	--	--	--	--

**JOB**