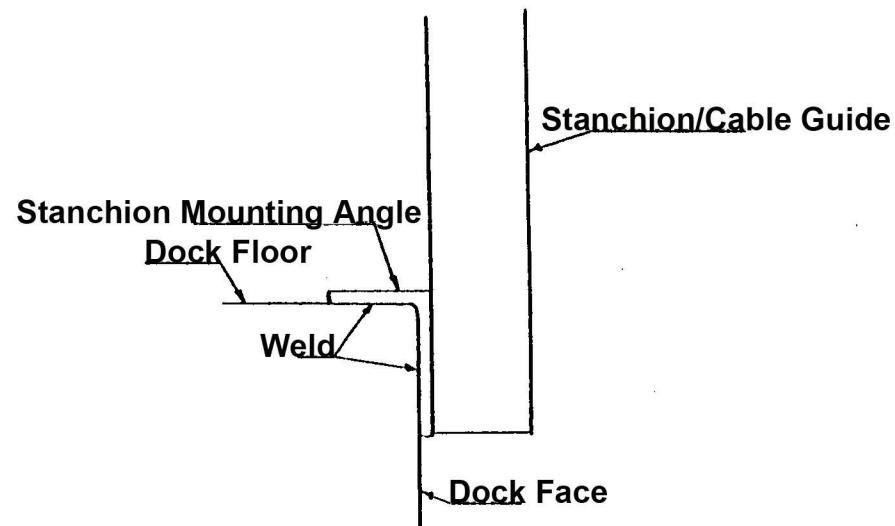
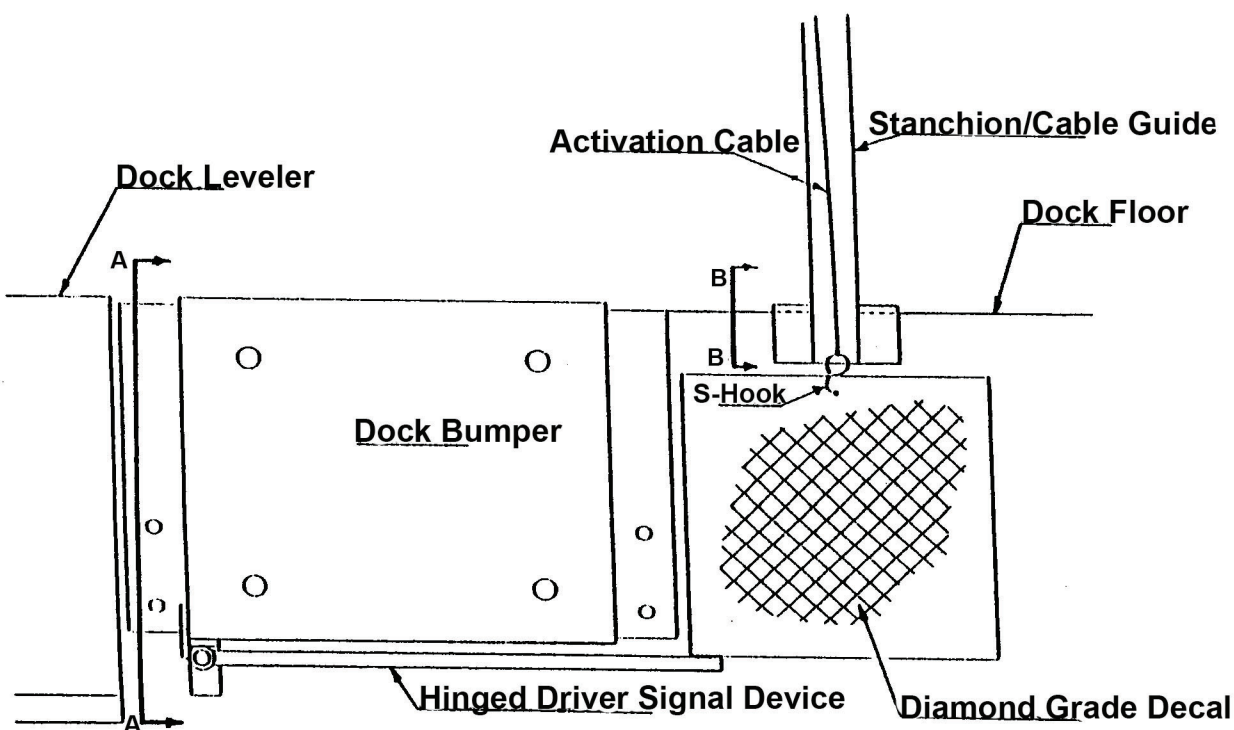


Section A-A



Section B-B



Driver Signal Device

Installation Instructions:

1. Position and weld "Driver Signal Hinge" as shown in Section A-A.
2. Position and weld "Stanchion/Cable Guide" as shown in Section B-B. First pull the Activation Cable up 2 feet into the Stanchion prior to welding to prevent cable damage. (Optional "Hook Mounting Post" also installs as shown in Section B-B)
3. Attach the "S-Hook", located at the lower end of the "Activation Cable", to the hole in the signal flag and crimp closed as shown in Driver Signal Device drawing.
4. Adjust opposite side chain and lifting hook (by others) so that the Signal is in the position shown in the drawing when the lifting hook is through the loop on the upper end of the "Activation Cable". Adjust so that there is a 3" sag from horizontal in the chain, lifting hook and activation cable from post to post.