

“PA1000” Series Airbag Leveler Submittal

“PA1000” SERIES AIRBAG DOCK LEVELER MODEL SPECIFICATIONS

MODEL	LIP*	DECK*	NOMINAL LENGTH	WIDTH	HINGE CF1045	SEAMLESS HINGE TUBE	OPERATING RANGE
PA16630	1/2" x 16"	1/4"	6'	72"	1" diameter	1 5/8" dia. O.D.	+12"-12"
PA16830	1/2" x 16"	1/4"	8'	72"	1" diameter	1 5/8" dia. O.D.	+12"-12"
PA16635	5/8" x 16"	1/4"	6'	72"	1 1/8" diameter	2" dia. O.D.	+12"-12"
PA16835	5/8" x 16"	1/4"	8'	72"	1 1/8" diameter	2" dia. O.D.	+12"-12"

INSERT SPECIFIC JOB REQUIREMENTS FROM CHART

--	--	--	--	--	--	--	--

STANDARD CAPACITY

A.N.S.I. CAPACITY

--	--

*Lip and deck, 55,000 lb. minimum yield steel;
3 year structural warranty.

STANDARD FEATURES

- (2) P4H1012 Bumpers
- Lip 16"
- Grease Fittings
- Full Range Toe Guards
- Powder Coated Yellow
- Maintenance Strut
- Lip Keepers/Night Locks
- Fully Hydraulic Actuation
- Yellow & Black Diagonal Safety Stripe on Toe Guards
- Motor--115 Volt 1ph. 60Hz

OPTIONAL FEATURES

- Lip 18"
 - Lip 20"
 - Weather Seals
 - Foam Insulation
 - Abrasive Deck
 - Laminated Bumper
- _____
Size



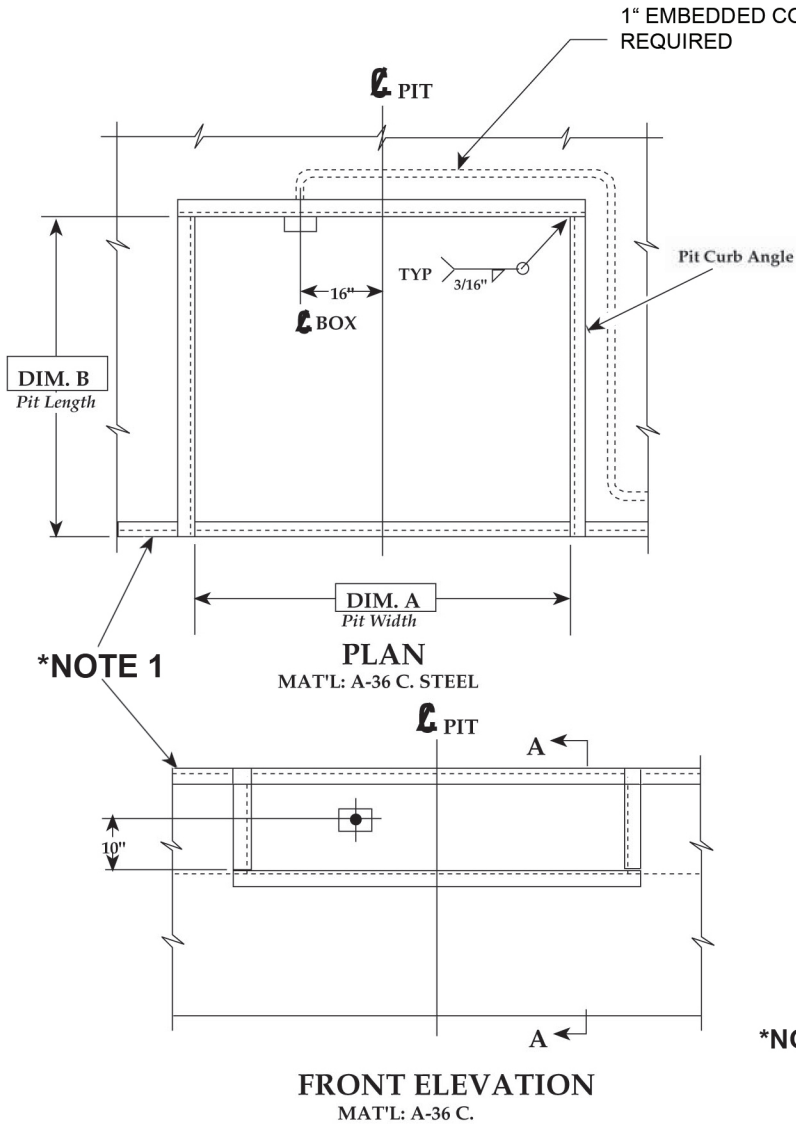
PO Box 338 • Spring Hill, Tennessee 37174
931.486.2296 • 800.251.3382 • Fax: 931.486.0316
www.pioneerleveler.com

JOB

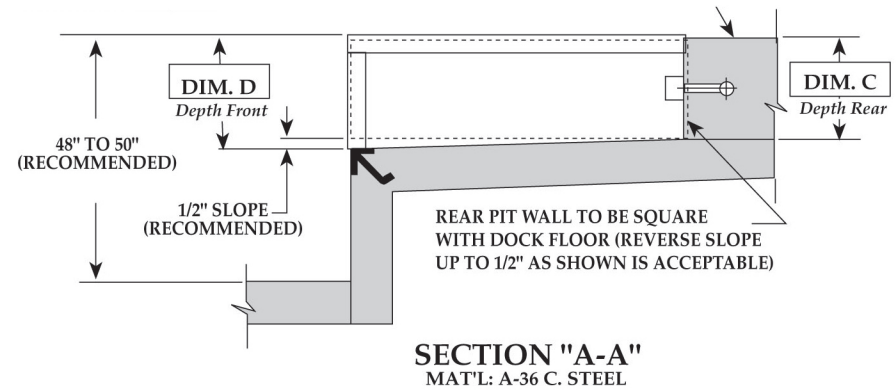
--

Pioneer reserves the right to make product improvement at any time without prior notice.

"PA1000" Series Airbag Leveler Pit Detail



VARIABLE DIMENSIONS				
MODEL	"A"	"B"	"C"	"D"
6'W x 6'L	74"	63"	19 1/2"	20"
6'W x 8'L	74"	87"	19 1/2"	20"
INSERT SPECIFIC JOB DIMENSIONS FROM CHART				



*NOTE 1 : Angle 3"x3"x1/4"x20"
Minimum Length or Run
Continuous Pit to Pit.
(Supplied By Others)

DRAWN :	SCALE: AS NOTED	DATE: 1/30/95	DRAWING NUMBER:
---------	-----------------	---------------	-----------------

TOLERANCES		
Inch Dimension =	Decimal Dimension =	Angles = 1



PO Box 338 • Spring Hill, Tennessee 37174
931.486.2296 • 800.251.3382 • Fax: 931.486.0316
www.pioneerleveler.com

JOB