

"ST" SERIES "SPEED TOUCH" PIT LEVELER SUBMITTAL DRAWING

"ST" SPEED TOUCH DOCK LEVELER MODEL SPECIFICATIONS

MODEL	LIP*	DECK**	NOMINAL LENGTH	WIDTH***	HINGE CF1045	SEAMLESS HINGE TUBE	OPERATING RANGE
ST6625 & 30 / ST7625 & 30	1/2" x 16"	1/4"	6'	72"/83"	1" diameter	1 5/8" dia. O.D.	+ 12" - 12"
ST6825 & 30 / ST7825 & 30	1/2" x 16"	1/4"	8'	72"/83"	1" diameter	1 5/8" dia. O.D.	+ 12" - 12"
ST6635,40&45 / ST7635,40&45	5/8" x 16"	1/4"	6'	72"/83"	1 1/8" diameter	2" dia. O.D.	+ 12" - 12"
ST6835,40&45 / ST7835,40&45	5/8" x 16"	1/4"	8'	72"/83"	1 1/8" diameter	2" dia. O.D.	+ 12" - 12"
ST61025&30 / ST71025&30	1/2" x 16"	1/4"	10'	72"/83"	1" diameter	1 5/8" dia. O.D.	+ 16" - 16"
ST61035, 40 &45	5/8" x 16"	1/4"	10'	72"	1 1/8" diameter	.2" dia. O.D.	+ 16" - 16"
ST71035, 40 &45	5/8" x 16"	1/4"	10'	83"	1 1/8" diameter	2" dia. O.D.	+ 16" - 16"

INSERT SPECIFIC JOB REQUIREMENTS FROM CHART

--	--	--	--	--	--	--	--

STANDARD CAPACITY

A.N.S.I. CAPACITY

--	--

* Lip and deck, 55,000 lb. minimum yield steel; 3 year structural warranty.

** Models with deck width of 78" (6 1/2') are available upon request.

OPTIONAL FEATURES

- Lip 18"
- Lip 20"
- Weather Seals (side & rear)
- Hydra-Lip (lip closes quietly)
- Full Range Toe Guards
- Foam Insulation
- Abrasive Deck
- Yellow & Black Diagonal Safety Stripe on Toe Guards
- Below Dock Control
- Laminated Bumpers

Size

STANDARD FEATURES

- (2) Molded Bumpers
- Lip 16"
- Grease Fittings
- Working Range Toe Guards
- Dual 60,000 lb Safety Legs
- Full Length Deck Support
- Air Operated Hold Down
- Direct Extension Spring Counter Balance (no moving parts)
- Lip Keeper/Night Locks Maintenance Strut
- Structural "C" Channel Deck support
- Air Lines

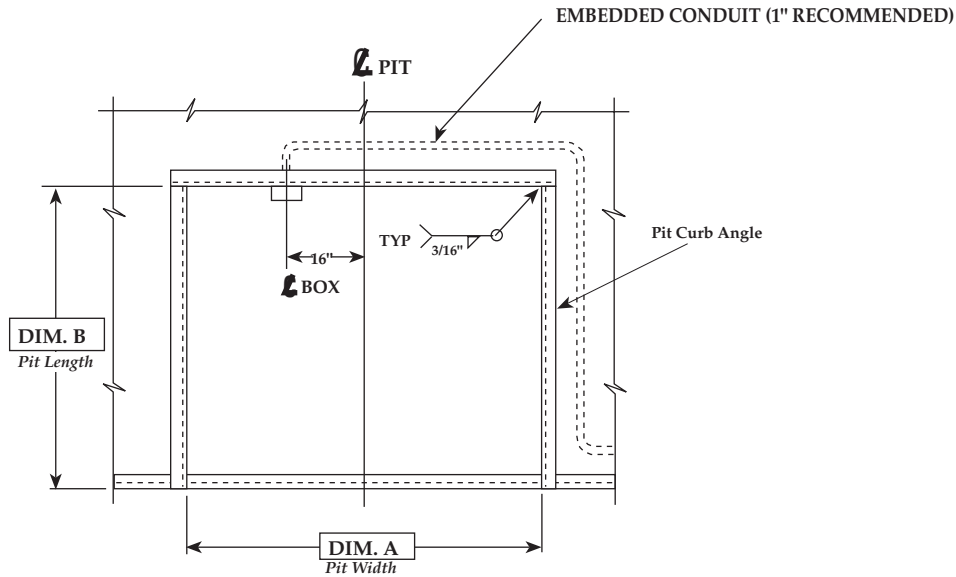


NOTES

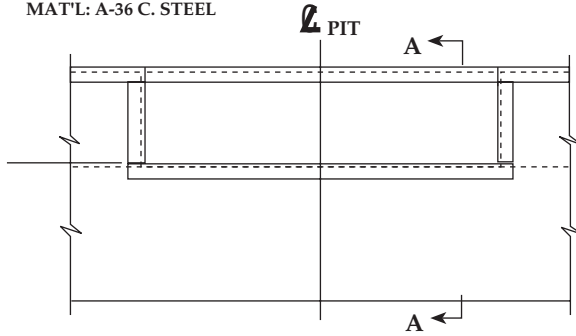
JOB

P.O. Box 338 • Spring Hill, Tennessee 37174
 931/486-2296 • 800/251-3382 • Fax: 931/486-0316
 www.pioneerleveler.com

"ST" SERIES "SPEED TOUCH" LEVELER PIT DETAIL



PLAN
MAT'L: A-36 C. STEEL

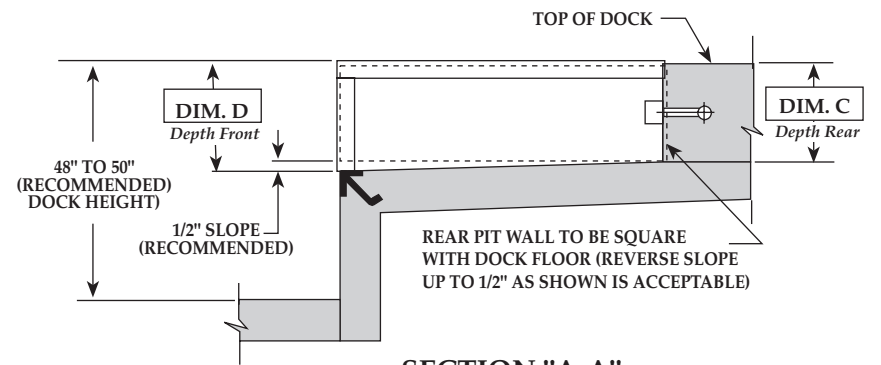


FRONT ELEVATION
MAT'L: A-36 C. STEEL

VARIABLE DIMENSIONS				
MODEL SIZE	"A"	"B"	"C"	"D"
6'W x 6'L	74"	63"	19 1/2"	20"
6'W x 8'L	74"	87"	19 1/2"	20"
6'-6"W x 6'L	80"	63"	19 1/2"	20"
6'-6"W x 8'L	80"	87"	19 1/2"	20"
7'W x 6'L	85"	63"	19 1/2"	20"
7'W x 8'L	85"	87"	19 1/2"	20"
6'W x 10'L	74"	111"	23 1/2"	24"
6'-6"W x 10'L	80"	111"	23 1/2"	24"
7'W x 10'L	85"	111"	23 1/2"	24"

INSERT SPECIFIC JOB DIMENSIONS FROM CHART

--	--	--	--	--



SECTION "A-A"
MAT'L: A-36 C. STEEL



P.O. Box 338 • Spring Hill, Tennessee 37174
 931/486-2296 • 800/251-3382 • Fax: 931/486-0316
 www.pioneerleveler.com

NOTES

JOB

DRAWN:	SCALE:	DATE:	DRAWING NUMBER:
J.M.G.	AS NOTED	1/30/95	PMI-2014-R1

TOLERANCES:		
Inch Dimension =	Decimal Dimension =	Angles =
1/16"	.005	1°