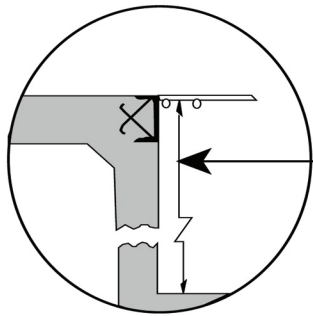
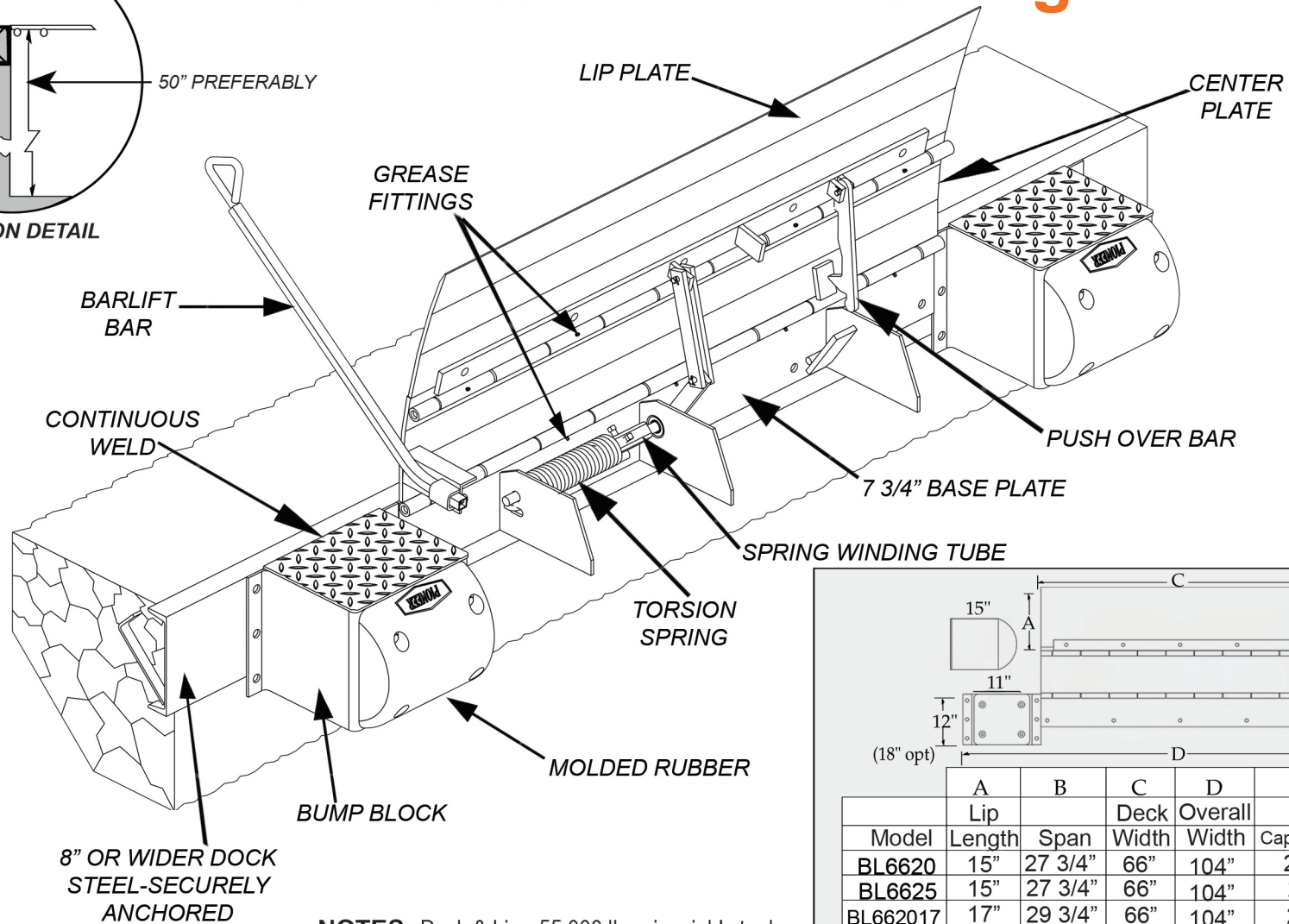


BarLift Submittal Drawing

03/26



SECTION DETAIL



8" OR WIDER DOCK
STEEL-SECURELY
ANCHORED

NOTES: Deck & Lip - 55,000 lb. min. yield steel.

30,000 lb. Capacity Units Available
35,000 lb. Capacity Units Available
40,000 lb. Capacity Units Available

	A	B	C	D	E	F
	Lip	Span	Deck	Overall	Capacity Lbs.	Plate
Model	Length	Span	Width	Width	Capacity Lbs.	Thickness
BL6620	15"	27 3/4"	66"	104"	20,000	3/8"
BL6625	15"	27 3/4"	66"	104"	25,000	7/16"
BL662017	17"	29 3/4"	66"	104"	20,000	3/8"
BL7220	15"	27 3/4"	72"	110"	20,000	3/8"
BL7820	15"	27 3/4"	78"	116"	20,000	3/8"
BL8420	15"	27 3/4"	84"	122"	20,000	3/8"



PO Box 338 • Spring Hill, Tennessee 37174
 931.486.2296 • 800.251.3382 • Fax: 931.486.0316
www.pioneerleveler.com

JOB

Pioneer reserves the right to make product improvement at any time without prior notice.