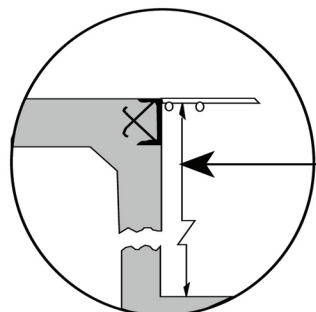
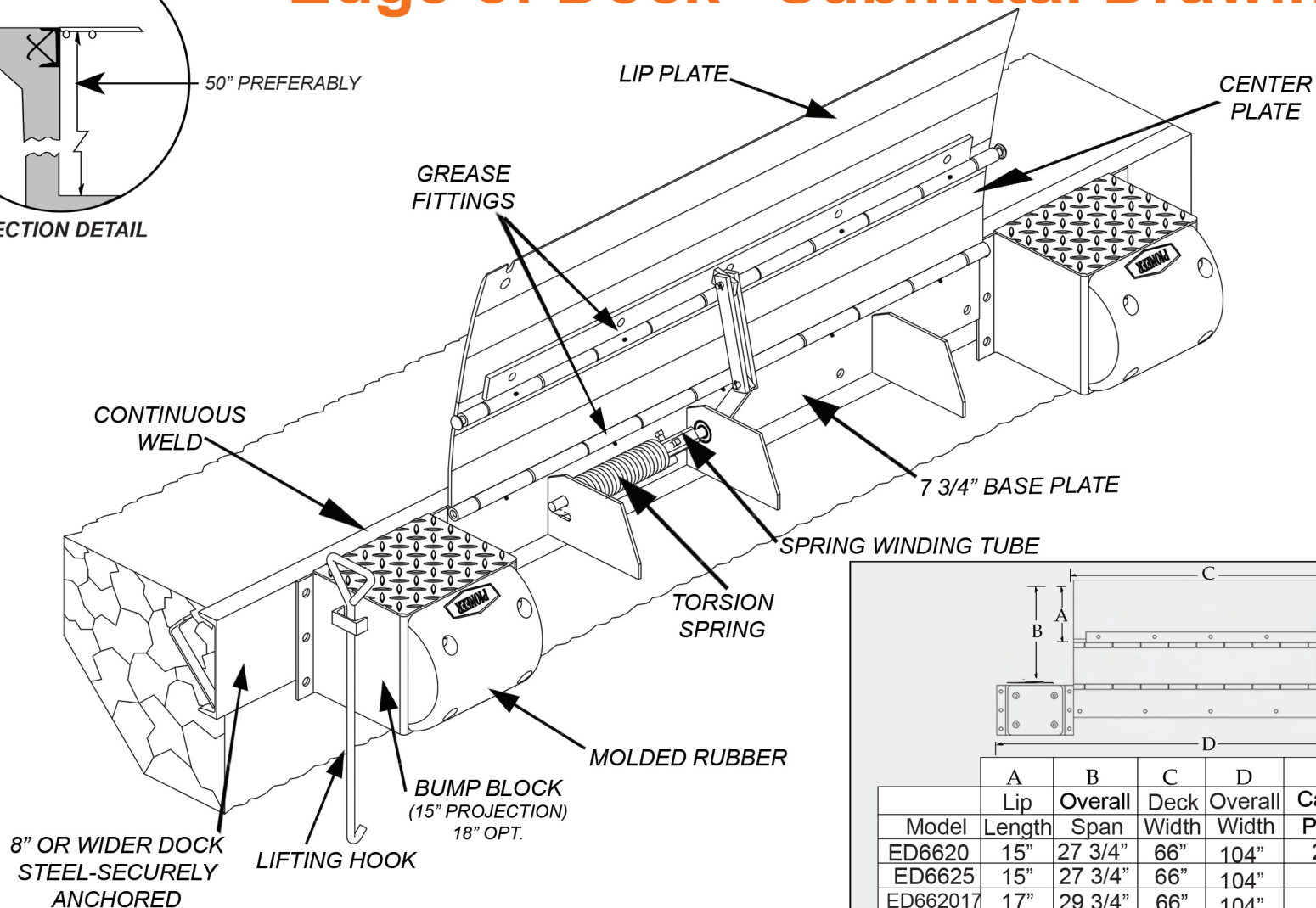


"Edge of Dock" Submittal Drawing

03/26



SECTION DETAIL



NOTES: Deck & Lip - 55,000 lb. min. yield steel.
30,000 lb Capacity units available.

	A	B	C	D	E	F
Model	Lip Length	Overall Span	Deck Width	Overall Width	Capacity Pounds	Plate Thickness
ED6620	15"	27 3/4"	66"	104"	20,000	3/8"
ED6625	15"	27 3/4"	66"	104"	25,000	7/16"
ED662017	17"	29 3/4"	66"	104"	20,000	3/8"
ED7220	15"	27 3/4"	72"	110"	20,000	3/8"
ED7820	15"	27 3/4"	78"	116"	20,000	3/8"
ED8420	15"	27 3/4"	84"	122"	20,000	3/8"



PO Box 338 • Spring Hill, Tennessee 37174
 931.486.2296 • 800.251.3382 • Fax: 931.486.0316
www.pioneerleveler.com

JOB

Pioneer reserves the right to make product improvement at any time without prior notice.