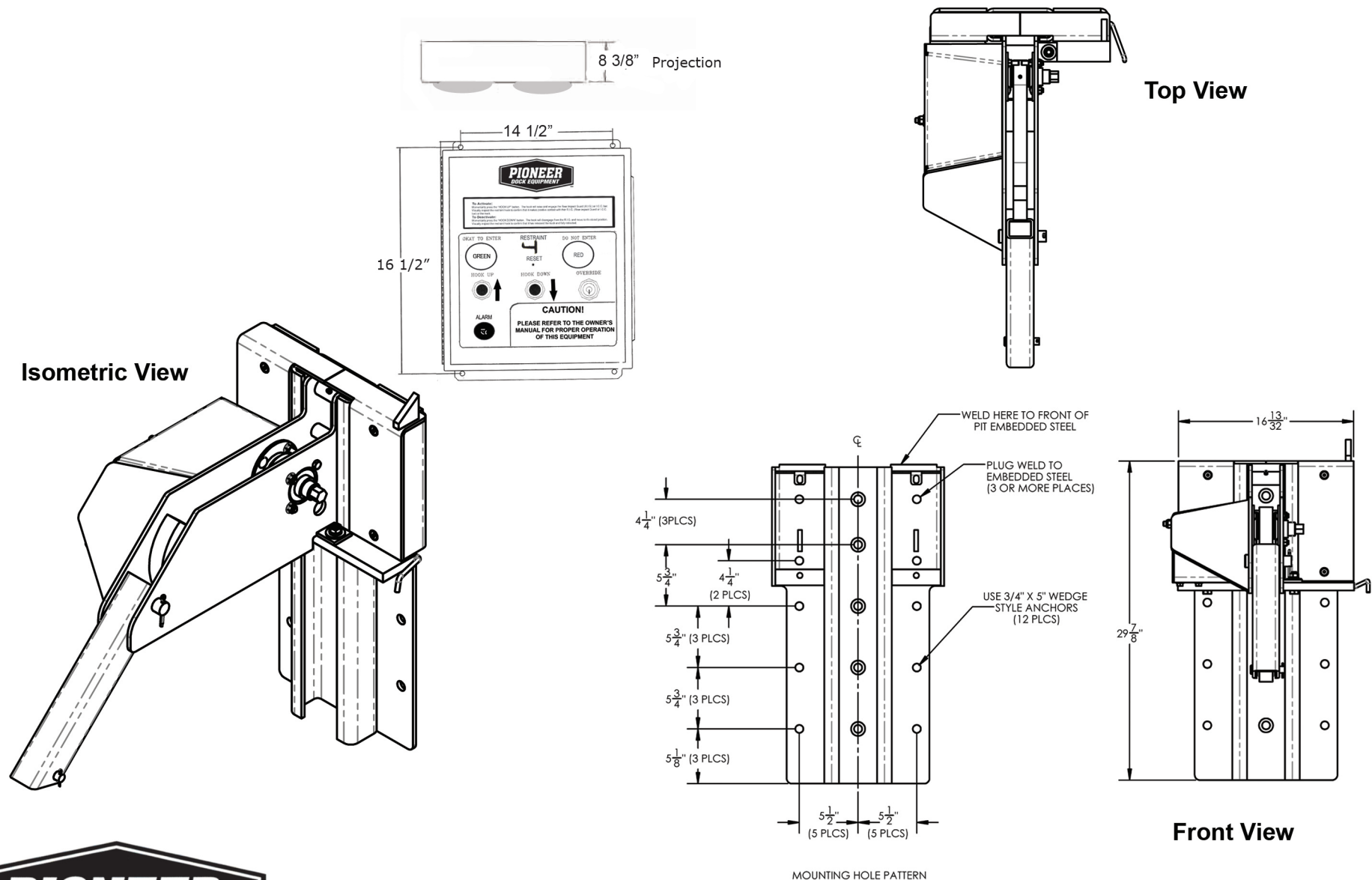


# "SLR950" Series Automatic Truck Restraint Detail



PO Box 338 • Spring Hill, Tennessee 37174  
 931.486.2296 • 800.251.3382 • Fax: 931.486.0316  
[www.pioneerleveler.com](http://www.pioneerleveler.com)

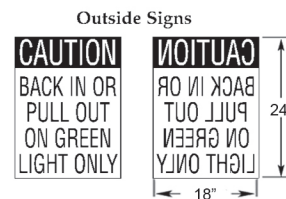
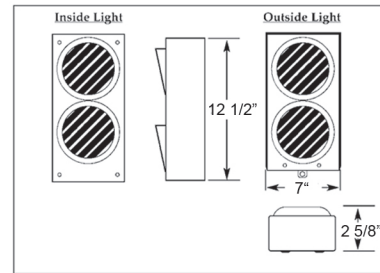
**JOB**

# "SLR950" Series Automatic Truck Restraint Submittal

## INSIDE/OUTSIDE TRAFFIC DOCK LIGHT PACKAGE WARNING SIGNS

### STANDARD FEATURES

- ✓ Automatic unit provides in excess of 32,000 lbs. restraining force
- ✓ Wide 9" - 27" operating range
- ✓ Captures and holds all legal ICC bars
- ✓ Designed to meet 1998 ICC regulations
- ✓ Positive contact hook automatically floats up or down with trailer
- ✓ Automatic inside/outside light system
- ✓ Complete inside/outside sign package included
- ✓ Bolt hole pattern designed for optimal holding force
- ✓ Low maintenance



INTERIOR CONTROL PANEL AND TRAFFIC  
SIGNAL 14 1/2"W X 16 1/2"H X 8 3/8"D MOUNT 60"  
ABOVE FLOOR TO BOTTOM

EXTERIOR TRAFFIC SIGNAL  
7"W X 12 1/2"H X 2 5/8"D CENTER  
HOUSING ABOUT 90" ABOVE  
GRADE FOR TRACTOR TRAILER  
SERVICE

DOCK LEVELER

SLR950 VEHICLE RESTRAINT  
MOUNT CENTRAL TO DOOR  
OPENING AGAINST DOCK FACE



### OPTIONAL FEATURES

- ☐ Steel mounting plate for new construction
- ☐ Steel blockouts for bumper projections greater than 4" including edge-of-dock levelers

PO Box 338 • Spring Hill, Tennessee 37174  
931.486.2296 • 800.251.3382 • Fax: 931.486.0316  
[www.pioneerleveler.com](http://www.pioneerleveler.com)