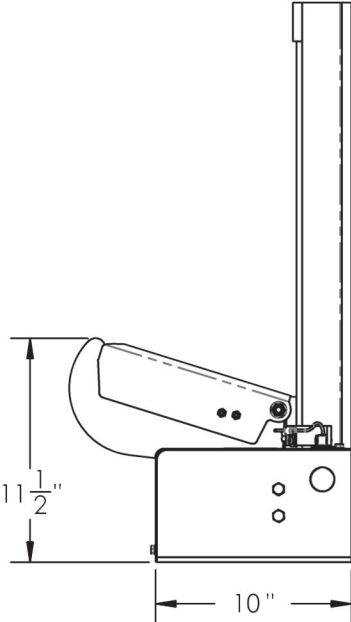
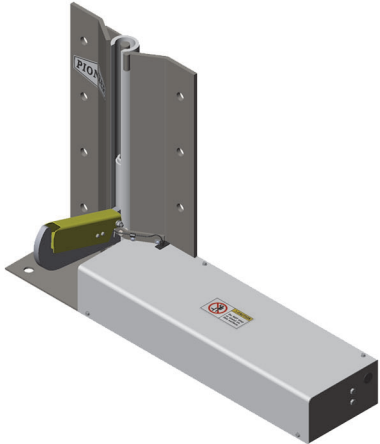
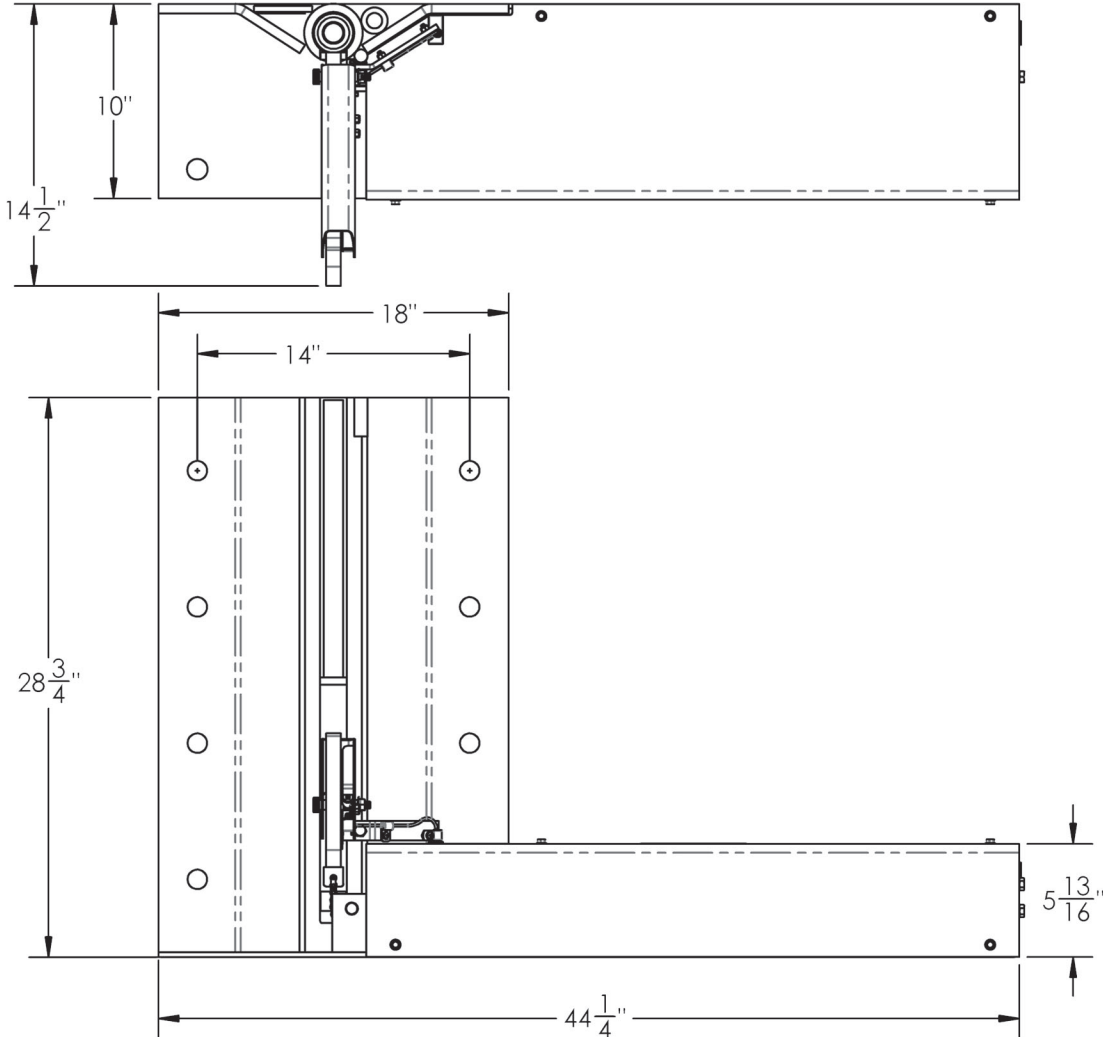


“EVR650S” Series Electrical Truck Restraint



PO Box 338 • Spring Hill, Tennessee 37174
931.486.2296 • 800.251.3382 • Fax: 931.486.0316
www.pioneerleveler.com

JOB

"EVR650S" Series Electrical Truck Restraint

12/20

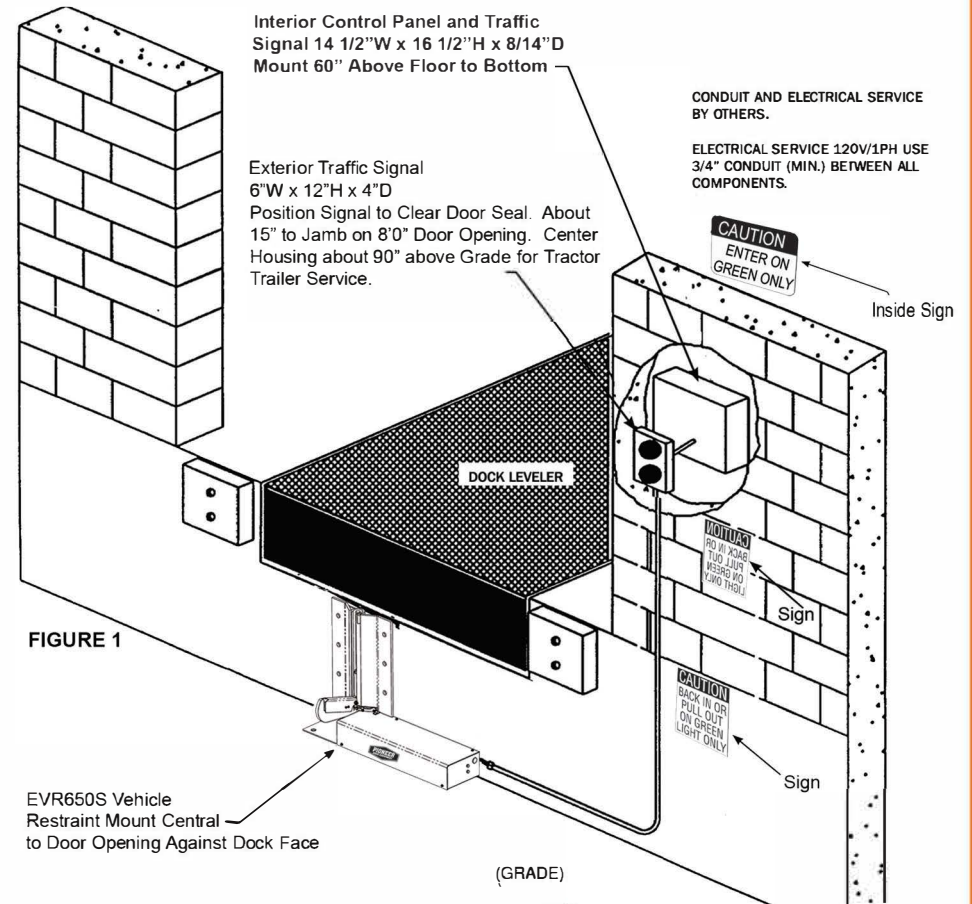
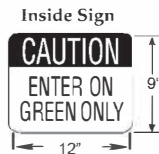
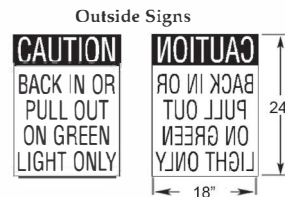
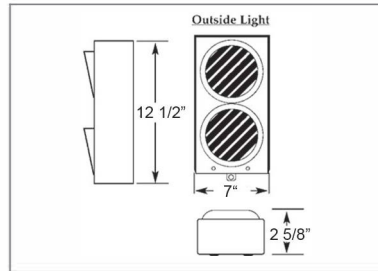
STANDARD FEATURES

- ✓ Automatic unit provides in excess of 50,000 lbs. restraining force
- ✓ Wide 12" - 30" operating range
- ✓ Captures and holds all legal ICC bars
- ✓ Non-impact operation - designed to meet 1998 ICC regulations
- ✓ Positive contact hook automatically floats up or down with trailer
- ✓ Automatic inside/outside light system
- ✓ Complete inside/outside sign package included
- ✓ The Guard on the EVR650S indicates positive contact with the R.I.G.
- ✓ Bolt hole pattern designed for optional holding force
- ✓ Low maintenance
- ✓ Approximately one (1) hour installation time (Not including electrical wiring).

OPTIONAL FEATURES

- Steel mounting plate for new construction
- Steel blockouts for bumper projections greater than 4" including edge-of-dock levelers

OUTSIDE TRAFFIC DOCK LIGHT PACKAGE WARNING SIGNS



PO Box 338 • Spring Hill, Tennessee 37174
 931.486.2296 • 800.251.3382 • Fax: 931.486.0316
www.pioneerleveler.com