

"C" Series Leveler Submittal Drawing

"C" SERIES MECHANICAL DOCK LEVELER MODEL SPECIFICATIONS

MODEL	LIP**	DECK**	NOMINAL LENGTH	WIDTH***	HINGE CF1045	SEAMLESS HINGE TUBE	OPERATING RANGE
C6630	7/16"x16"	1/4"	6'	72"	1" diameter	1 5/8" dia. O.D.	+12"-12"
C6830	7/16"x16"	1/4"	8'	72"	1" diameter	1 5/8" dia. O.D.	+12"-12"
C7630	7/16"x16"	1/4"	6'	83"	1" diameter	1 5/8" dia. O.D.	+12"-12"
C7830	7/16"x16"	1/4"	8'	83"	1" diameter	1 5/8" dia. O.D.	+12"-12"
C6635	7/16"x16"	1/4"	6'	72"	1" diameter	1 5/8" dia. O.D.	+12"-12"
C6835	7/16"x16"	1/4"	8'	72"	1" diameter	1 5/8" dia. O.D.	+12"-12"
C7635	7/16"x16"	1/4"	6'	83"	1" diameter	1 5/8" dia. O.D.	+12"-12"
C7835	7/16"x16"	1/4"	8'	83"	1" diameter	1 5/8" dia. O.D.	+12"-12"
C6640	1/2"x16"	1/4"	6'	72"	1" diameter	1 5/8" dia. O.D.	+12"-12"
C6840	1/2"x16"	1/4"	8'	72"	1" diameter	1 5/8" dia. O.D.	+12"-12"
C7640	1/2"x16"	1/4"	6'	83"	1" diameter	1 5/8" dia. O.D.	+12"-12"
C7840	1/2"x16"	1/4"	8'	83"	1" diameter	1 5/8" dia. O.D.	+12"-12"

INSERT SPECIFIC JOB REQUIREMENTS FROM CHART

--	--	--	--	--	--	--	--

STANDARD CAPACITY

A.N.S.I. CAPACITY

--	--

**Lip and deck, 55,000 lb. minimum yield steel

WARRANTY: 1 Year on structural members & main springs, 1 year on mechanical & misc. parts (including materials, labor & freight).

STANDARD FEATURES

- ☒ (2) Molded Bumpers
- ☒ Lip 16"
- ☒ Grease Fittings
- ☒ Working Range Toe Guards
- ☒ Dual Safety Legs
- ☒ Full Length Deck Support
- ☒ Direct Extension Spring
- ☒ Counter Balance (no moving parts)
- ☒ Lip Keepers/Night Locks
- ☒ Maintenance Strut
- ☒ Yellow & Black Diagonal Safety Stripe on Toe Guards

OPTIONAL FEATURES

- ☐ Lip 18"
- ☐ Lip 20"
- ☐ Abrasive Deck
- ☐ Foam Insulation
- ☐ Hydra Lip
- ☐ Weather Seals (side & rear)
- ☐ Below Dock Control
- ☐ Full Range Toe Guards (Powder Coat Yellow)
- ☐ Laminated Bumpers

Size

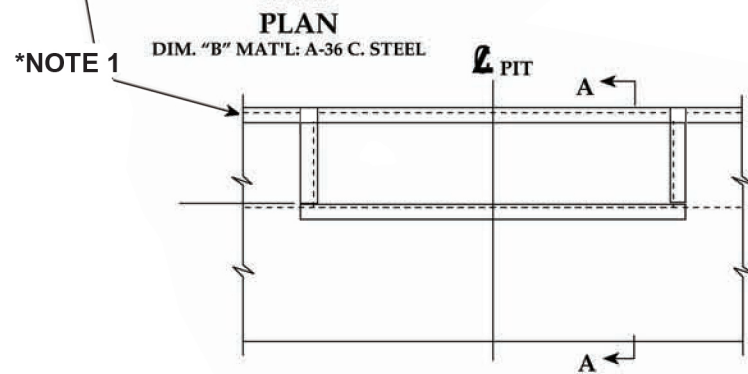
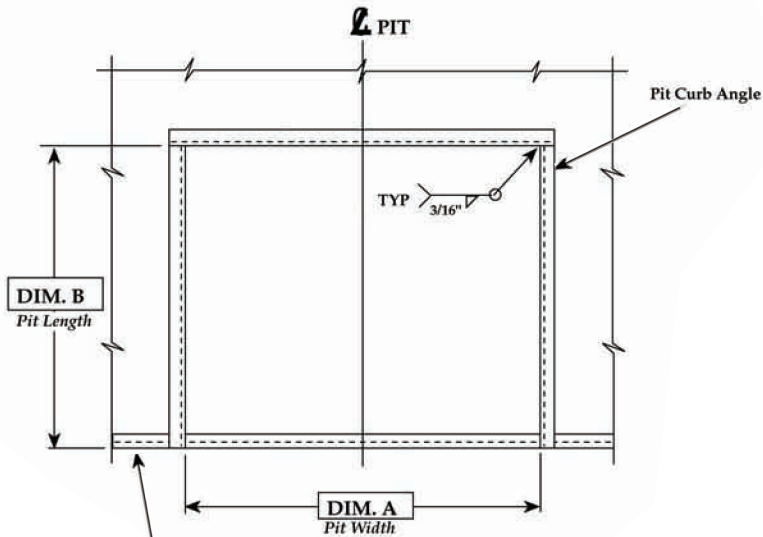


PO Box 338 • Spring Hill, Tennessee 37174
 931.486.2296 • 800.251.3382 • Fax: 931.486.0316
www.pioneerleveler.com

JOB

Pioneer reserves the right to make product improvement at any time without prior notice.

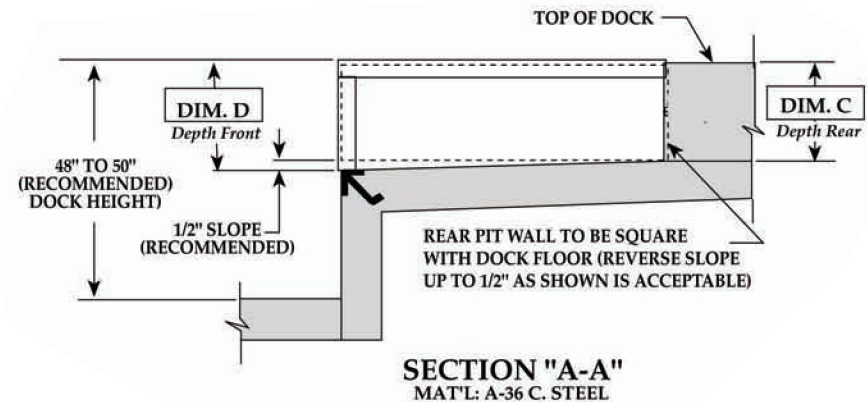
"C" Series Pit Detail



FRONT ELEVATION
DIM. "B" MAT'L: A-36 C. STEEL

*** NOTE 1:** Angle 3"x3"x1/4"x20"
Minimum Length or Run
Continuous Pit to Pit.
(Supplied By Others)

VARIABLE DIMENSIONS				
MODEL SIZE	"A"	"B"	"C"	"D"
6'W x 6'L	74"	63"	19 1/2"	20"
6'W x 8'L	74"	87"	19 1/2"	20"
7'W x 6'L	85"	63"	19 1/2"	20"
7'W x 8'L	85"	87"	19 1/2"	20"
INSERT SPECIFIC JOB DIMENSIONS FROM CHART				



SECTION "A-A"
MAT'L: A-36 C. STEEL

DRAWN:	SCALE:	DATE:	DRAWING NUMBER:
D.E.A.	AS NOTED	6/19/96	PMI-2010
TOLERANCES:			
Inch Dimension =	Decimal Dimension =	Angles	
1/16"	.005	=	1°



PO Box 338 • Spring Hill, Tennessee 37174
931.486.2296 • 800.251.3382 • Fax: 931.486.0316
www.pioneerleveler.com

JOB